

**THE ORIGINAL.
FOR VERTICAL.**

STRIEBIG ExpertCut CUT OPTIMISATION

THE “PROFESSIONAL” VERSION FOR CONTROL & STRIEBIG 4D



STRIEBIG ExpertCut BENEFITS AND FUNCTION

You transfer parts lists from standard ERP or CAD systems and optimise them with the STRIEBIG cutting optimisation software directly at the office workplace. You can also use the program to edit and manage job lists, material and item lists.

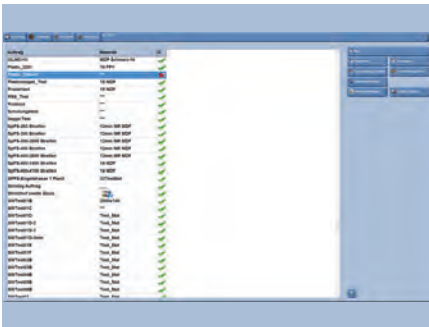
You can transfer the cutting plan from your office workstation directly to the CONTROL or STRIEBIG 4D. The intelligent visualisation on the 12-inch touchscreen then guides the operator through the individual cutting steps.

Using the START button, the operator positions the sawing unit and the longitudinal stop (EPS- X) on the CONTROL and STRIEBIG 4D and automatically moves to the defined dimensions.

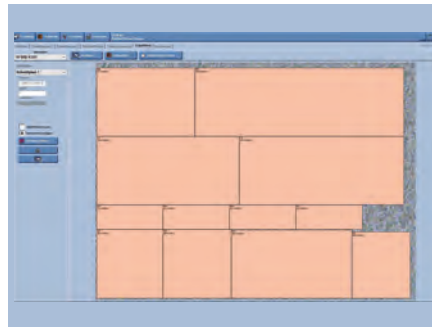
In combination with the panel lowering device (PAV) and the fully automatic programmable panel pusher (PPS), the STRIEBIG 4D even runs the entire horizontal and vertical transport of the workpiece automatically.

This allows you to benefit from all the features that ExpertCut has to offer. CONTROL or STRIEBIG 4D work through your optimised cutting plan cut by cut.

The label printer prints the label for the identification of the cut element directly during cutting. Top quality meets maximum efficiency.



ExpertCut job list - Office



ExpertCut cutting plan - Office



ExpertCut processing cutting plan

CAN BE USED WITH / NOT RETROFITTABLE

- **STRIEBIG CONTROL**
(from year of manufacture 2018)
- **STRIEBIG 4D**

SCOPE OF DELIVERY

- EPS-X electronic positioning system
- 12" touchscreen panel with 1 touch pen input pen
- Software package (operator guidance with STRIEBIG ExpertCut), incl. 1 network licence for office workstation
- Label printer
- Connection option for network connection via LAN
- Operating instructions
- Document holder

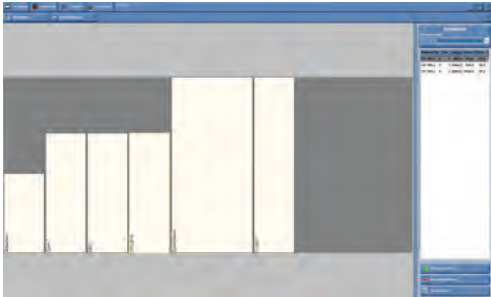
NOT INCLUDED IN THE SCOPE OF DELIVERY

- Installation of the STRIEBIG cutting optimisation software at the office workplace
- Training STRIEBIG cutting optimisation software ExpertCut
- Customised setup of data import interface and label layout
- Software options (retrofittable)

We reserve the right to make modifications for the purpose of technical improvement.

**THE ORIGINAL.
FOR VERTICAL.**

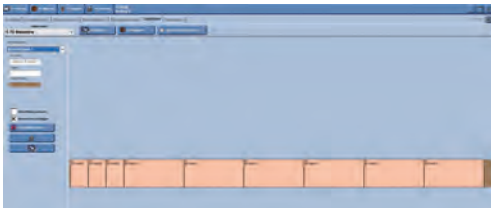
STRIEBIG ExpertCut CUT OPTIMISATION SOFTWARE OPTIONS (RETROFITTABLE)



REST STOCK MANAGEMENT OptiStock

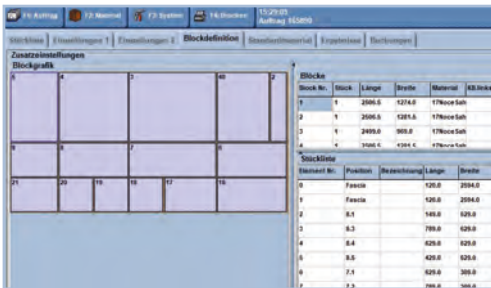
It enables a graphic visualisation of the remnant stock. Scraps can be allocated to the various defined storage boxes.

If remnants are created during cutting, they can be booked into the stock. The offcuts are booked in and out in offcut stock management.



NARROW STRIPS OPTIMISATION

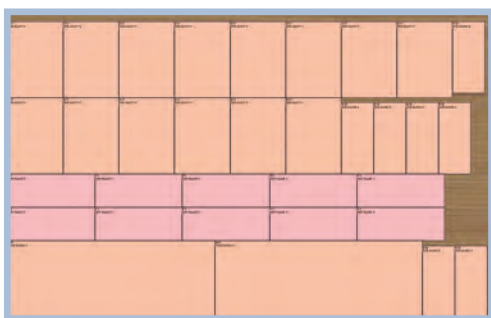
Material that is only cut lengthwise can be optimised with narrow strips optimisation (turning depth 0).



BLOCK PARTS MANAGEMENT

Parts defined from the parts list can be combined into a block and cut as a block.

The creation of block parts is helpful if, for example, the width of the double fronts of a drawer cabinet is too narrow for edge banding or the fronts should have a continuous grain pattern. In such cases, the double fronts are combined into a block and edge banded on the left and right sides. The block is then cut into the individual front doubles and edge banded on both sides.



FILLING PARTS MANAGEMENT

These can be serial parts that are available in stock and can be used as required.

As soon as the stock falls below the minimum stock level, the serial parts are generated again in the cutting optimisation. These serial parts (filler parts) are generated in the cutting pattern from the remaining materials. This means that the panels can be better utilised.



EDGE CALCULATION

This additional module can be used to generate an edge consumption list.

The lengths of all edge band materials required to produce the elements of this material are listed in the generated list.